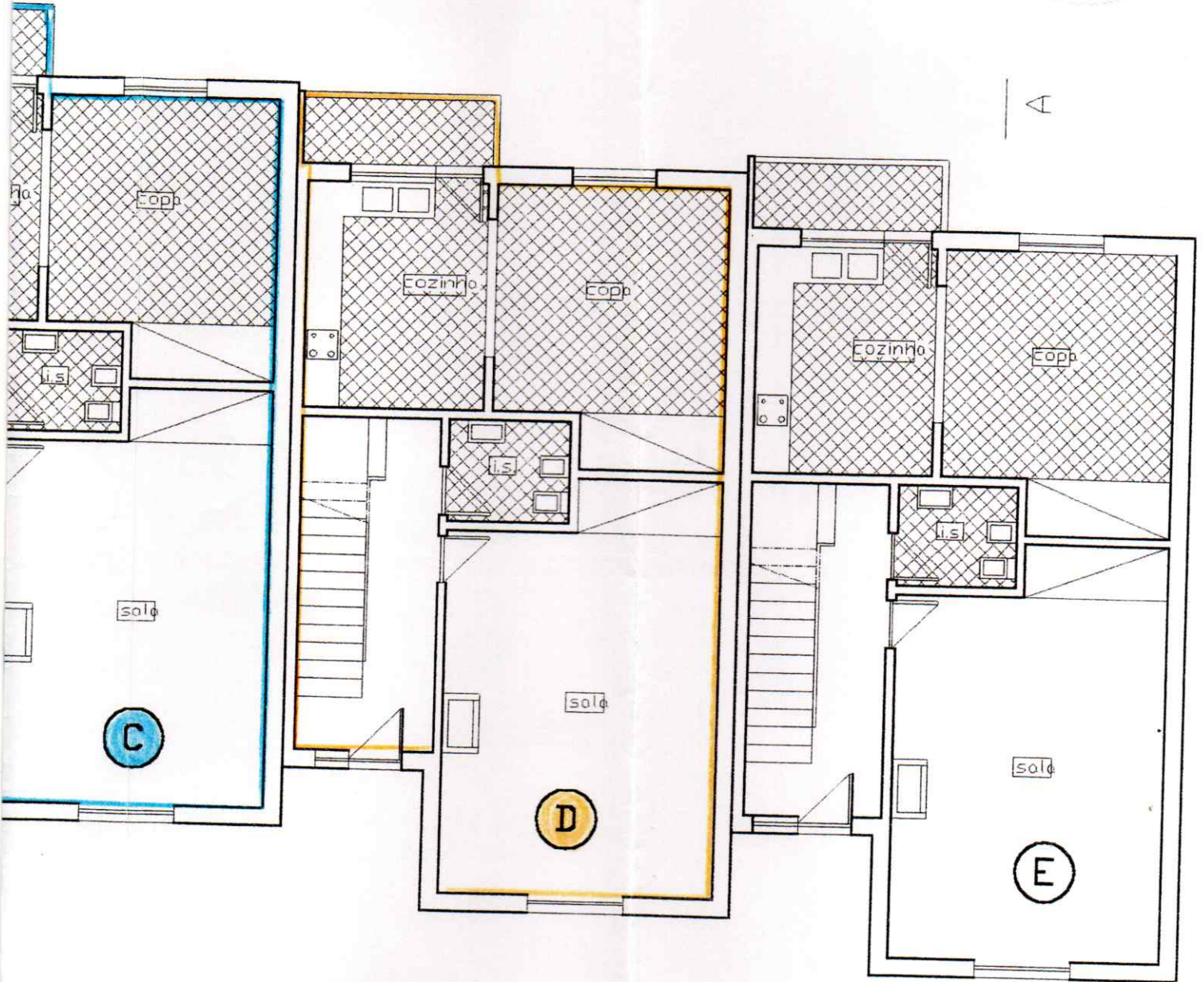


Aprovado em Reunião da
Câmara Municipal realizada
em 28/03/2001



REQ:

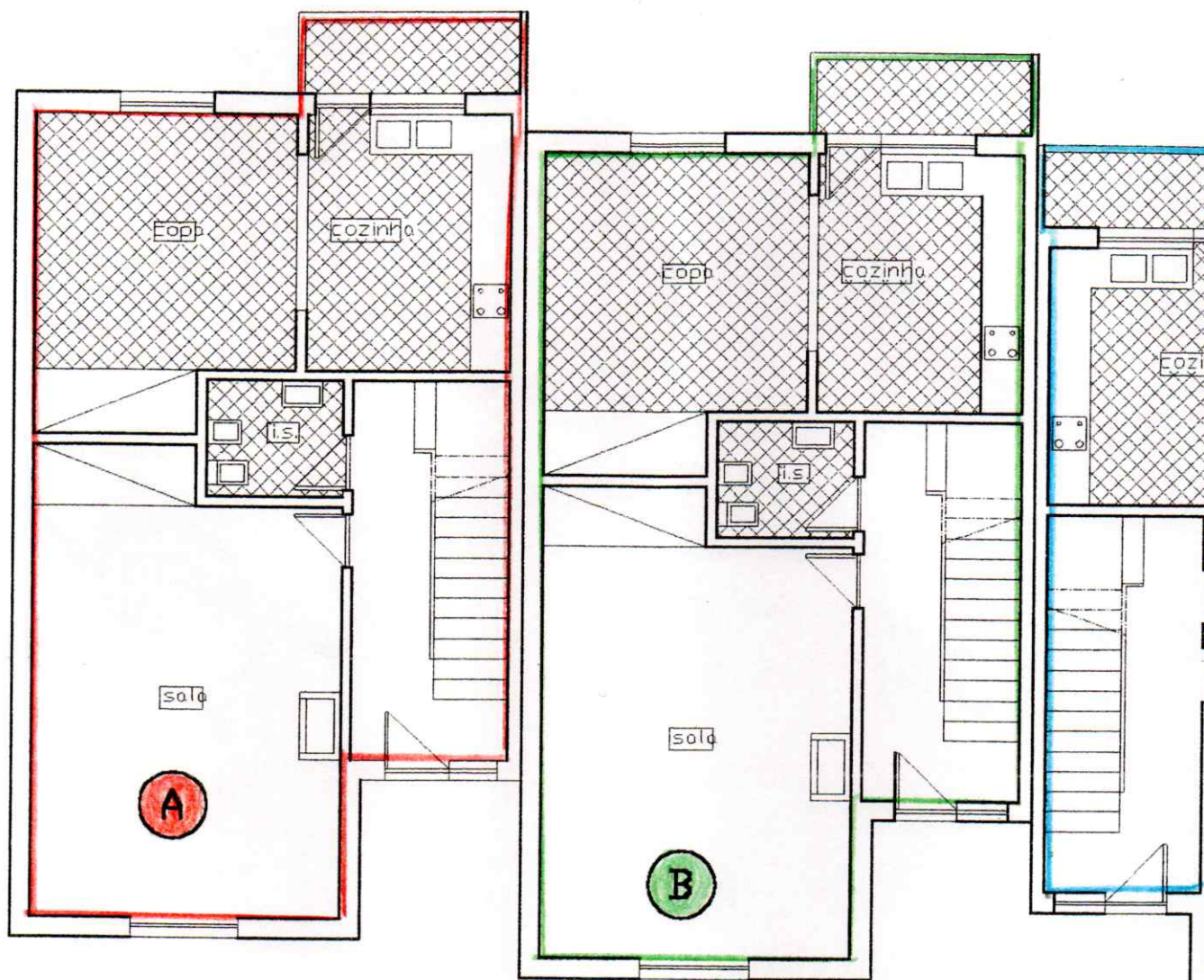
Santos, Martins & Calisto

LOC:

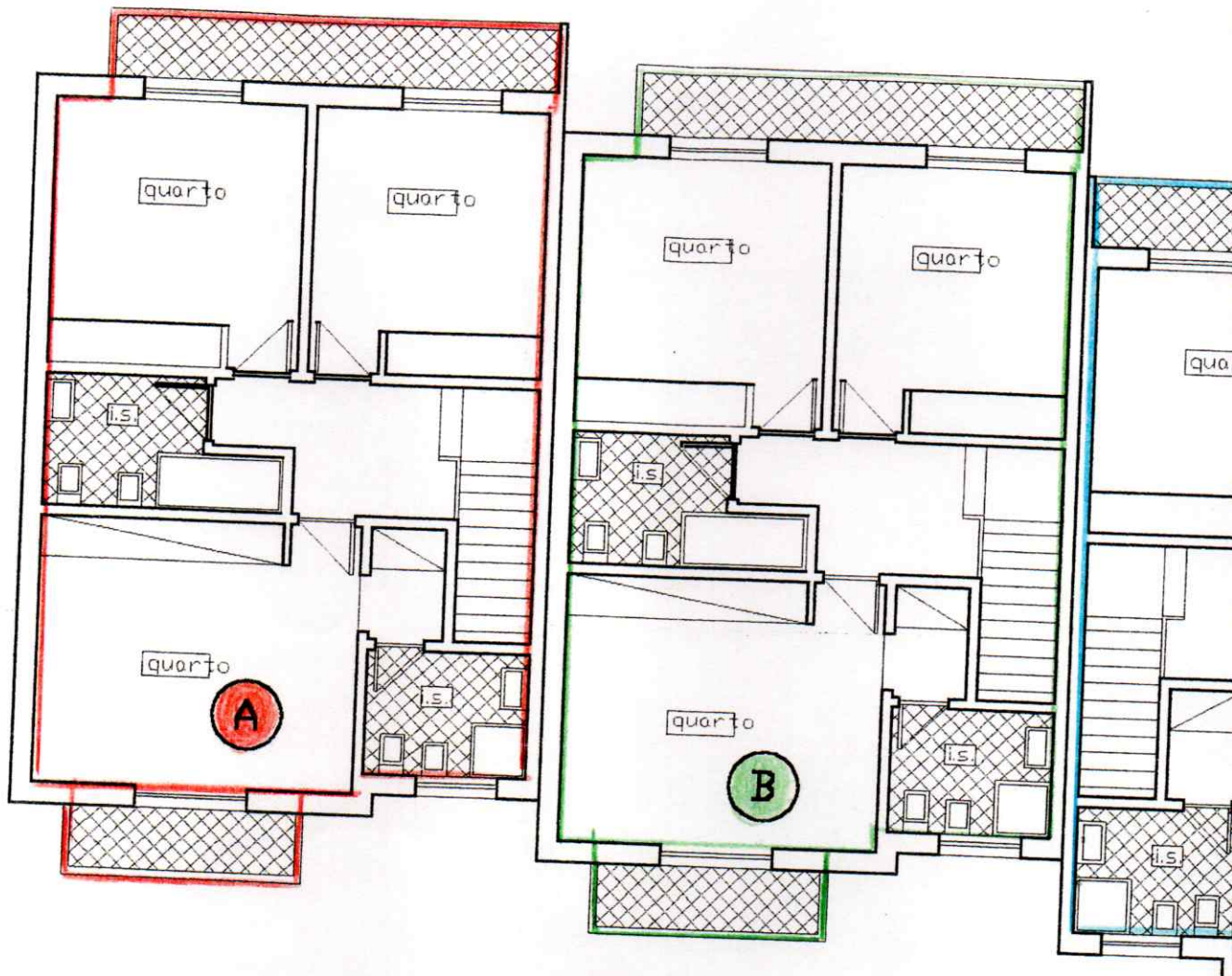
Coche, Branca, A.-a-Velha

Escala: 1/100

PROPRIEDADE HORIZONTAL

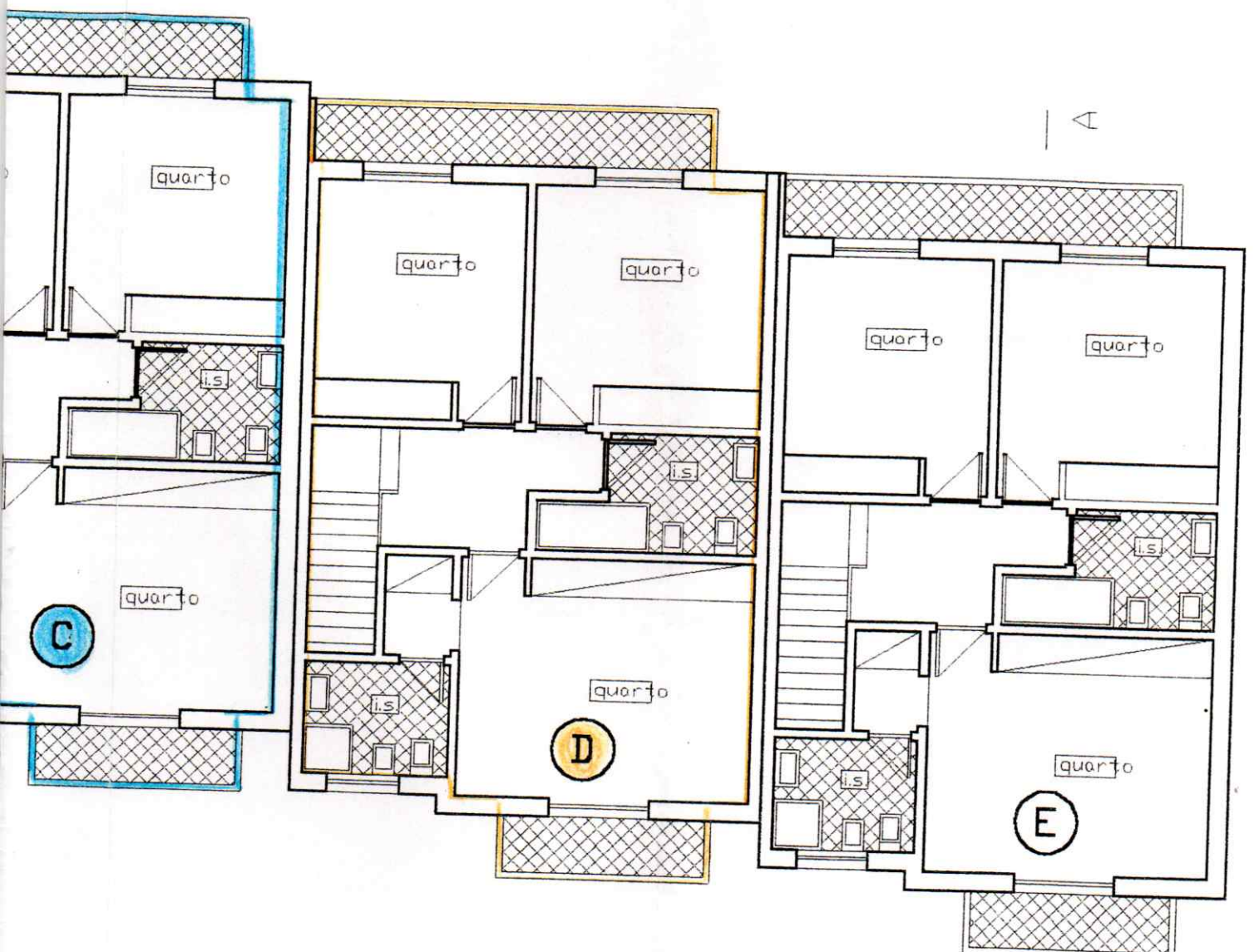


PLANTA RES DO CHÃO



PLANTA ANDAR

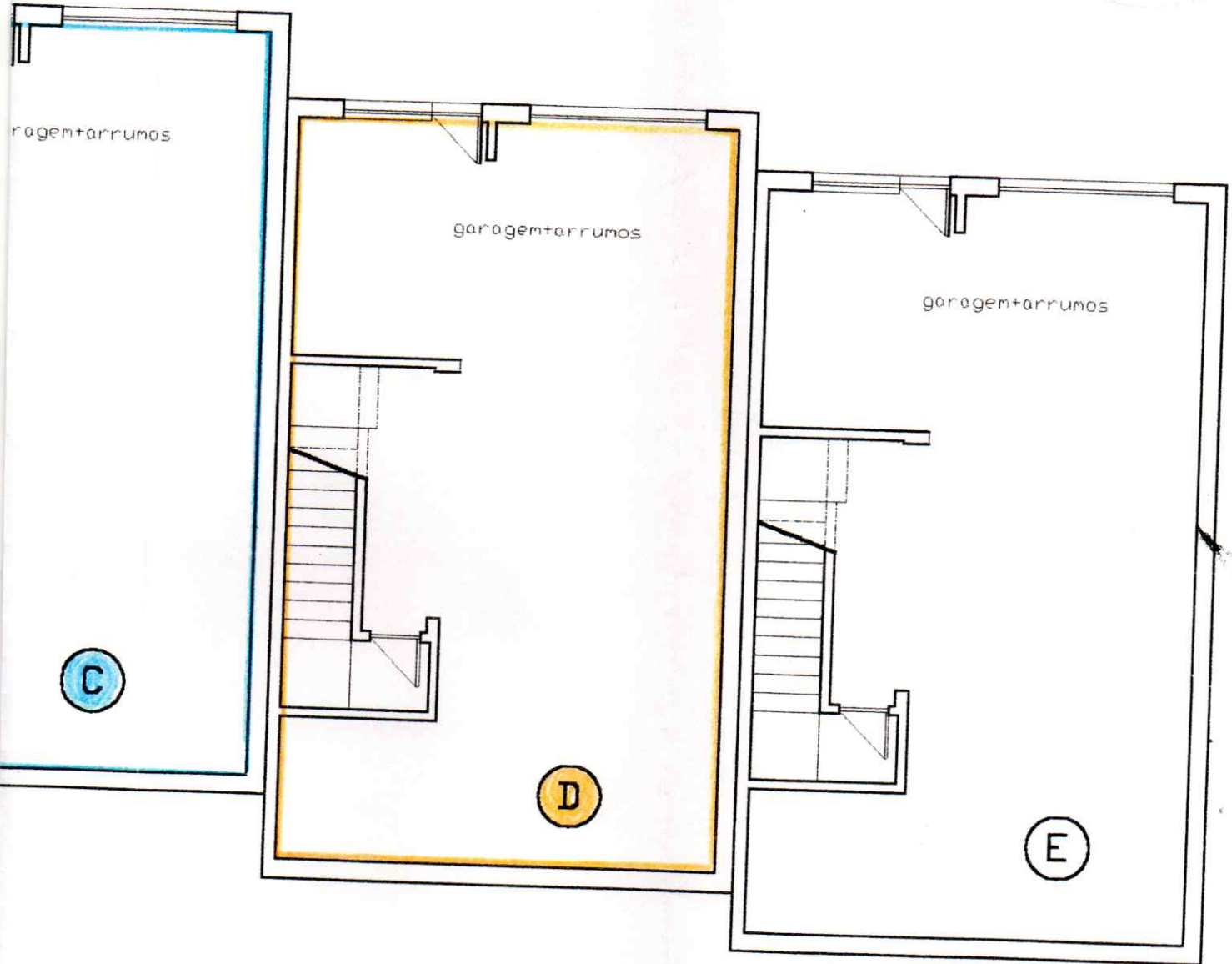
Aprovado em Reunião da
Câmara Municipal realizada
em 28/03/2001



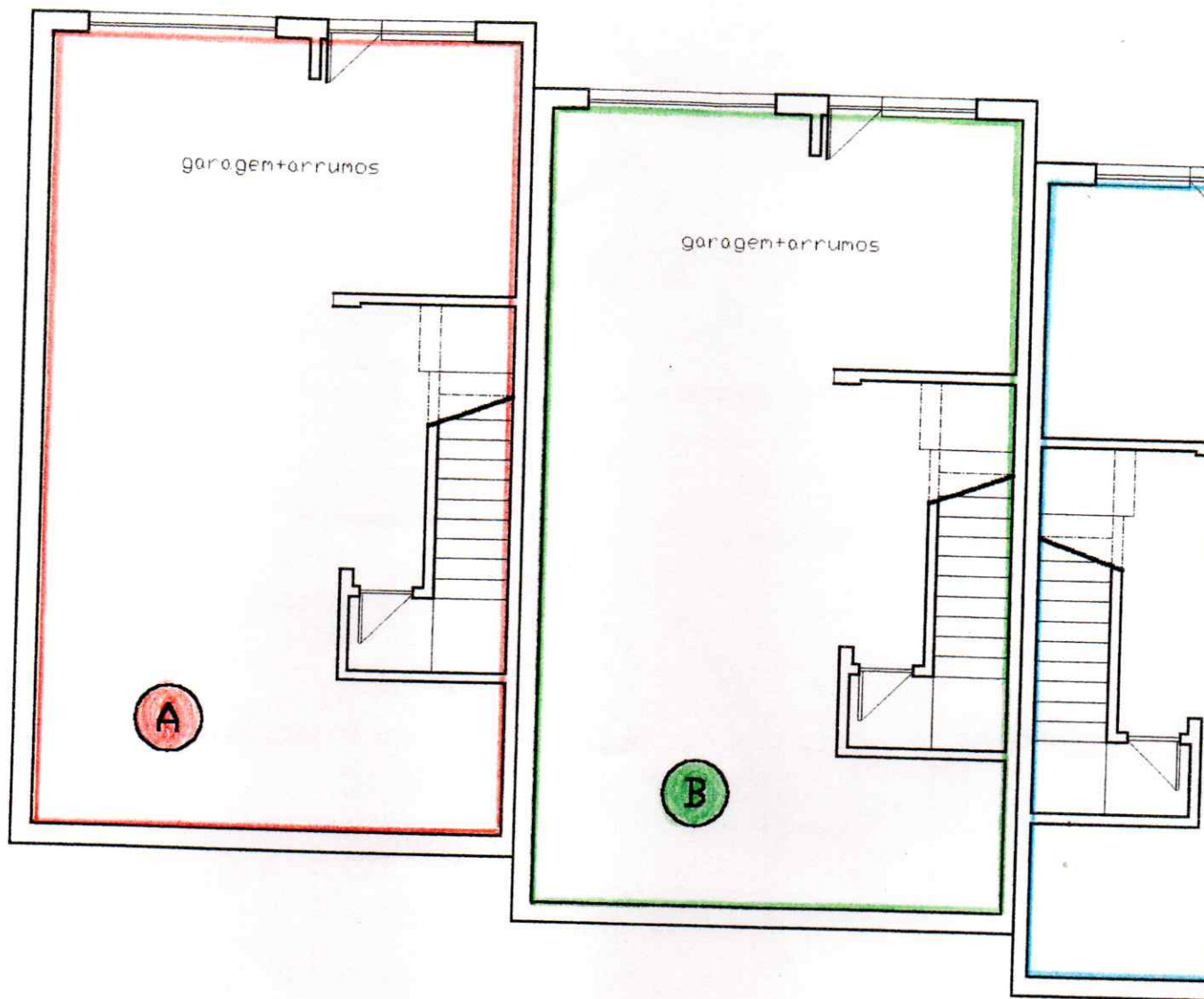
Handwritten signature or initials.

REQ: Santos . Martins & Calisto	LOC: Coche . Branca . A-a-Velha
Escala: 1/100	PROPRIEDADE HORIZONTAL

Aprovado em Reunião da
Câmara Municipal realizada
em 28/03/2001



REQ:	Santos, Martins & Calisto	LOC:	Coche, Branca, A.-a-Velha
Escala: 1/100	PROPRIEDADE HORIZONTAL		



PLANTA DA CAVE