



QUINTA DE FARO
PRIVATE LUXURY VILLAS
ALGARVE



Kitchen equipment is not contractual. Their position is indicative. Dimensions and areas are given subject to technical construction and execution requirements. The fallout from false ceilings, soffits and pipes are not systematically shown. The thickness of the insulation will be determined by the technical execution study and therefore the data in this plan are only indicative.

Co-Developer :

MJ Développement
55 Avenue d'Espagne
64600 ANGLET - FRANCE
Tel: +33 5 59 03 13 00

MJ DÉVELOPPEMENT
PROMOTEUR CONSTRUCTEUR

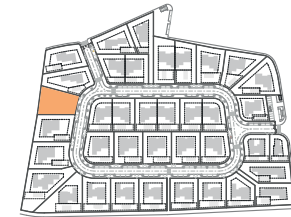
Serip Groupe
2, avenue de la Liberté
83120 Sainte-Maxime - FRANCE


SERIP GROUPE

SALES PLAN

VILLA N°03 DOUBLE STOREY

SITE PLAN



TOTAL INTERIOR LIVING AREA 378.6 m²

GROUND FLOOR 189.8 m²

Living	41 m ²
Dining room	23.4 m ²
Kitchen	18.7 m ²
Ensuite Bedroom 1	22.6 m ²
Ensuite Bedroom 2	22.4 m ²
Dressing Ensuite Bedroom 2	3.4 m ²
Ensuite Bedroom 3	27.4 m ²
Dressing Ensuite Bedroom 3	6.1 m ²
Guest toilet	5.1 m ²
Lobby, Hallway	19.7 m ²

BASEMENT 188.8 m²

Hallway	14.6 m ²
Corridor	13.9 m ²
Laundry	11.7 m ²
Gym, Hammam	48.8 m ²
Wine Cellar	14.4 m ²
Garage	59.6 m ²
Technical room swim Pool	25.8 m ²

TOTAL EXTERIOR AREA 146.8 m²

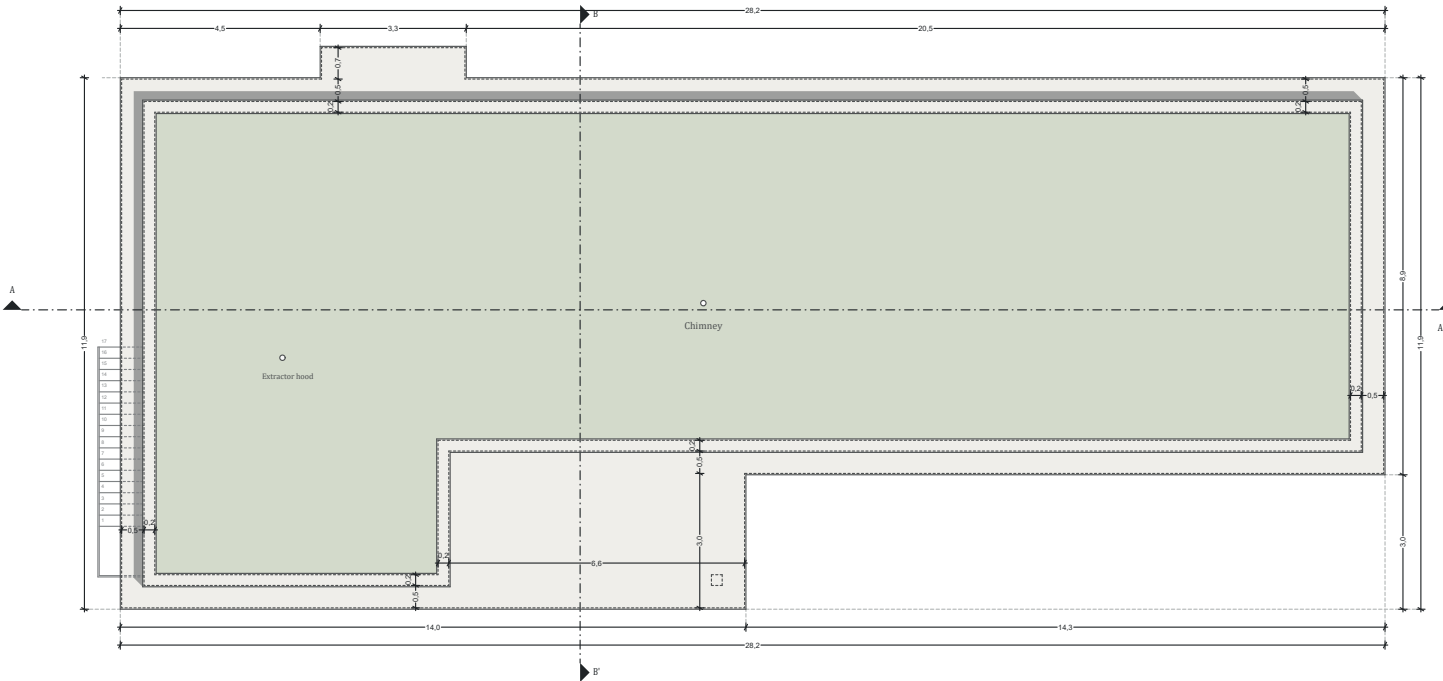
Patio/Fountain	15 m ²
Covered terrace	18.2 m ²
Pool Deck	64.5 m ²
Swimming pool	49.1 m ²

TOTAL AREA 525.4 m²

Plot of Land	972.1 m ²
Altimetry	15



QUINTA DE FARO
— PRIVATE LUXURY VILLAS —
ALGARVE

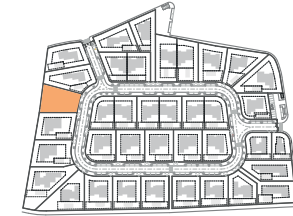


Kitchen equipment is not contractual. Their position is indicative. Dimensions and areas are given subject to technical construction and execution requirements.
The fallout from false ceilings, soffits and pipes are not systematically shown.
The thickness of the insulation will be determined by the technical execution study and therefore the data in this plan are only indicative.

SALES PLAN

VILLA N°03 DOUBLE STOREY

FLOOR COVERING PLAN



TOTAL INTERIOR LIVING AREA 378.6 m²

GROUND FLOOR 189.8 m²

Living	41 m ²
Dining room	23.4 m ²
Kitchen	18.7 m ²
Ensuite Bedroom 1	22.6 m ²
Ensuite Bedroom 2	22.4 m ²
Dressing Ensuite Bedroom 2	3.4 m ²
Ensuite Bedroom 3	27.4 m ²
Dressing Ensuite Bedroom 3	6.1 m ²
Guest toilet	5.1 m ²
Lobby, Hallway	19.7 m ²

BASEMENT 188.8 m²

Hallway	14.6 m ²
Corridor	13.9 m ²
Laundry	11.7 m ²
Gym, Hammam	48.8 m ²
Wine Cellar	14.4 m ²
Garage	59.6 m ²
Technical room swim Pool	25.8 m ²

TOTAL EXTERIOR AREA 146.8 m²

Patio/Fountain	15 m ²
Covered terrace	18.2 m ²
Pool Deck	64.5 m ²
Swimming pool	49.1 m ²

TOTAL AREA 525.4 m²

Plot of Land	972.1 m ²
Altimetry	15

MJ Développement
55 Avenue d'Espagne
64600 ANGLET - FRANCE
Tel: +33 5 59 03 13 00

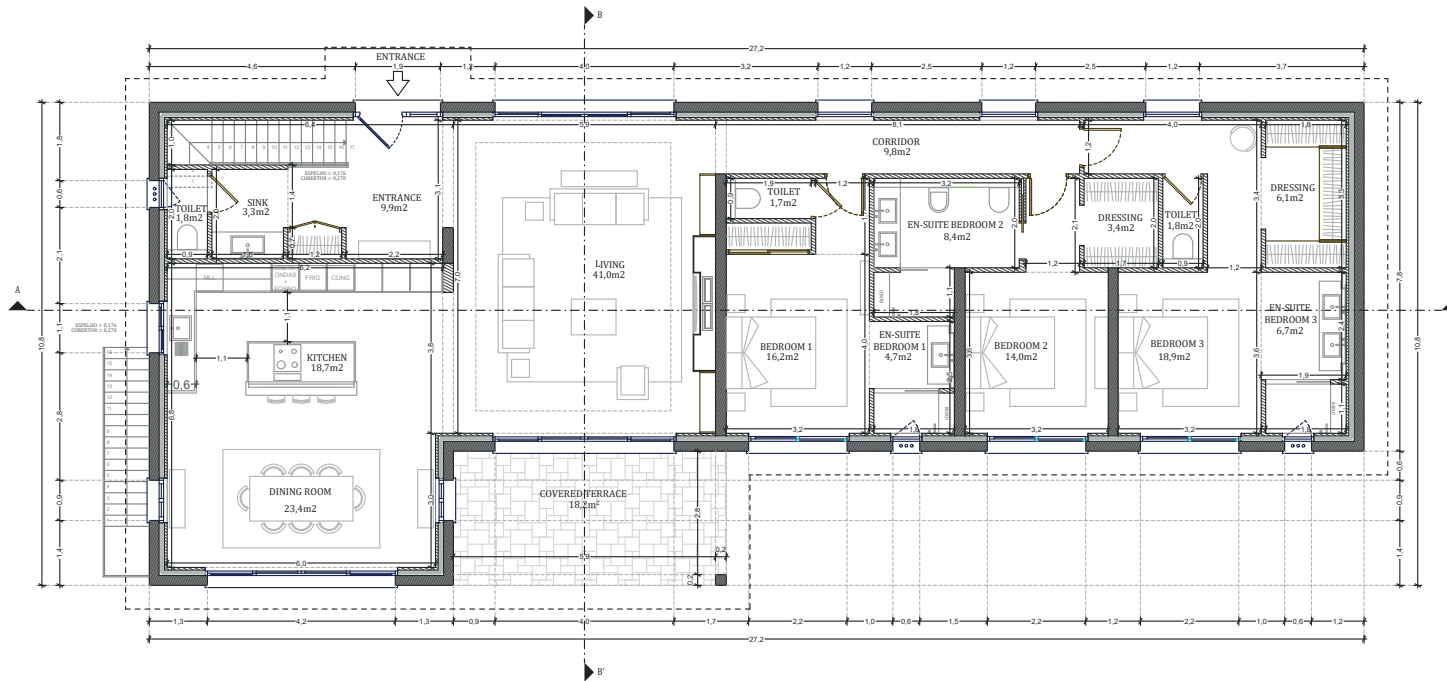
MJ DÉVELOPPEMENT
PROMOTEUR CONSTRUCTEUR

Serip Groupe
2, avenue de la Liberté
83120 Sainte-Maxime - FRANCE


SERIP GROUPE



QUINTA DE FARO
PRIVATE LUXURY VILLAS
ALGARVE

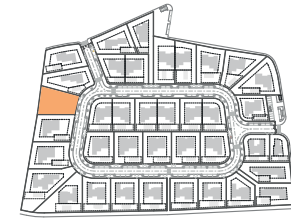


Kitchen equipment is not contractual. Their position is indicative. Dimensions and areas are given subject to technical construction and execution requirements. The fallout from false ceilings, soffits and pipes are not systematically shown. The thickness of the insulation will be determined by the technical execution study and therefore the data in this plan are only indicative.

SALES PLAN

VILLA N°03 DOUBLE STOREY

GROUND FLOOR



TOTAL INTERIOR LIVING AREA 378.6 m²

GROUND FLOOR 189.8 m²

Living	41 m ²
Dining room	23.4 m ²
Kitchen	18.7 m ²
Ensuite Bedroom 1	22.6 m ²
Ensuite Bedroom 2	22.4 m ²
Dressing Ensuite Bedroom 2	3.4 m ²
Ensuite Bedroom 3	27.4 m ²
Dressing Ensuite Bedroom 3	6.1 m ²
Guest toilet	5.1 m ²
Lobby, Hallway	19.7 m ²

BASEMENT 188.8 m²

Hallway	14.6 m ²
Corridor	13.9 m ²
Laundry	11.7 m ²
Gym, Hammam	48.8 m ²
Wine Cellar	14.4 m ²
Garage	59.6 m ²
Technical room swim Pool	25.8 m ²

TOTAL EXTERIOR AREA 146.8 m²

Patio/Fountain	15 m ²
Covered terrace	18.2 m ²
Pool Deck	64.5 m ²
Swimming pool	49.1 m ²

TOTAL AREA 525.4 m²

Plot of Land	972.1 m ²
Altimetry	15

MJ Développement
55 Avenue d'Espagne
64600 ANGLÈT - FRANCE
Tel: +33 5 59 03 13 00

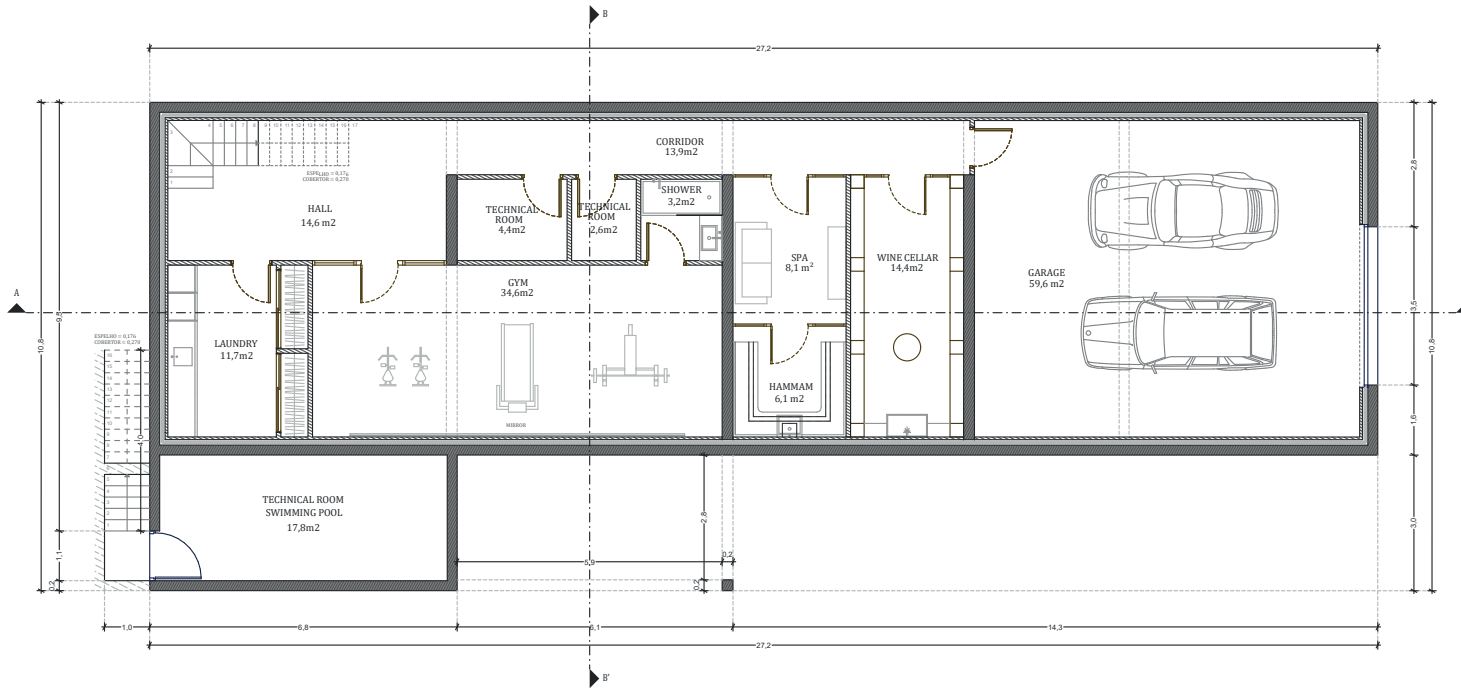
MJ DÉVELOPPEMENT
PROMOTEUR CONSTRUCTEUR

Serip Groupe
2, avenue de la Liberté
83120 Sainte-Maxime - FRANCE


SERIP GROUPE



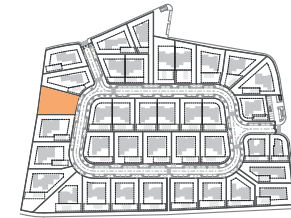
QUINTA DE FARO
PRIVATE LUXURY VILLAS
ALGARVE



SALES PLAN

VILLA N°03 DOUBLE STOREY

BASEMENT



TOTAL INTERIOR LIVING AREA 378.6 m²

GROUND FLOOR 189.8 m²

Living	41 m ²
Dining room	23.4 m ²
Kitchen	18.7 m ²
Ensuite Bedroom 1	22.6 m ²
Ensuite Bedroom 2	22.4 m ²
Dressing Ensuite Bedroom 2	3.4 m ²
Ensuite Bedroom 3	27.4 m ²
Dressing Ensuite Bedroom 3	6.1 m ²
Guest toilet	5.1 m ²
Lobby, Hallway	19.7 m ²

BASEMENT 188.8 m²

Hallway	14.6 m ²
Corridor	13.9 m ²
Laundry	11.7 m ²
Gym, Hammam	48.8 m ²
Wine Cellar	14.4 m ²
Garage	59.6 m ²
Technical room swim Pool	25.8 m ²

TOTAL EXTERIOR AREA 146.8 m²

Patio/Fountain	15 m ²
Covered terrace	18.2 m ²
Pool Deck	64.5 m ²
Swimming pool	49.1 m ²

TOTAL AREA 525.4 m²

Plot of Land	972.1 m ²
Altimetry	15

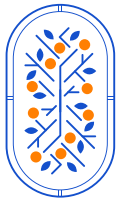
Kitchen equipment is not contractual. Their position is indicative. Dimensions and areas are given subject to technical construction and execution requirements. The fallout from false ceilings, soffits and pipes are not systematically shown. The thickness of the insulation will be determined by the technical execution study and therefore the data in this plan are only indicative.

MJ Développement
55 Avenue d'Espagne
64600 ANGLET - FRANCE
Tel: +33 5 59 03 13 00

MJ DÉVELOPPEMENT
PROMOTEUR CONSTRUCTEUR

Serip Groupe
2, avenue de la Liberté
83120 Sainte-Maxime - FRANCE


SERIP GROUPE



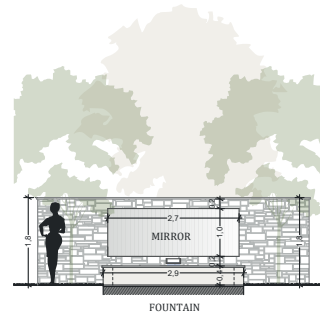
QUINTA DE FARO
PRIVATE LUXURY VILLAS
ALGARVE



SECTION AA'



SECTION BB'



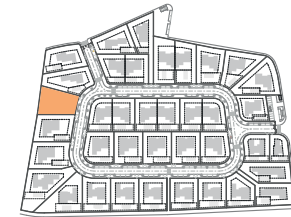
SECTION PATIO

Kitchen equipment is not contractual. Their position is indicative. Dimensions and areas are given subject to technical construction and execution requirements. The fallout from false ceilings, soffits and pipes are not systematically shown. The thickness of the insulation will be determined by the technical execution study and therefore the data in this plan are only indicative.

SALES PLAN

VILLA N°03 DOUBLE STOREY

SECTIONAL PLAN



TOTAL INTERIOR LIVING AREA 378.6 m²

GROUND FLOOR 189.8 m²

Living	41 m ²
Dining room	23.4 m ²
Kitchen	18.7 m ²
Ensuite Bedroom 1	22.6 m ²
Ensuite Bedroom 2	22.4 m ²
Dressing Ensuite Bedroom 2	3.4 m ²
Ensuite Bedroom 3	27.4 m ²
Dressing Ensuite Bedroom 3	6.1 m ²
Guest toilet	5.1 m ²
Lobby, Hallway	19.7 m ²

BASEMENT 188.8 m²

Hallway	14.6 m ²
Corridor	13.9 m ²
Laundry	11.7 m ²
Gym, Hammam	48.8 m ²
Wine Cellar	14.4 m ²
Garage	59.6 m ²
Technical room swim Pool	25.8 m ²

TOTAL EXTERIOR AREA 146.8 m²

Patio/Fountain	15 m ²
Covered terrace	18.2 m ²
Pool Deck	64.5 m ²
Swimming pool	49.1 m ²

TOTAL AREA 525.4 m²

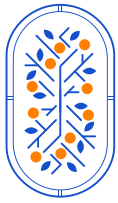
Plot of Land	972.1 m ²
Altimetry	15

MJ Développement
55 Avenue d'Espagne
64600 ANGLÈT - FRANCE
Tel: +33 5 59 03 13 00

MJ DÉVELOPPEMENT
PROMOTEUR CONSTRUCTEUR

Serip Groupe
2, avenue de la Liberté
83120 Sainte-Maxime - FRANCE


SERIP GROUPE



QUINTA DE FARO
— PRIVATE LUXURY VILLAS —
ALGARVE

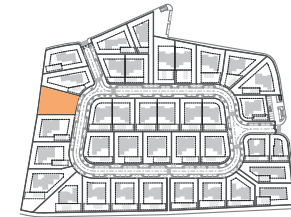


Kitchen equipment is not contractual. Their position is indicative. Dimensions and areas are given subject to technical construction and execution requirements. The fallout from false ceilings, soffits and pipes are not systematically shown. The thickness of the insulation will be determined by the technical execution study and therefore the data in this plan are only indicative.

SALES PLAN

VILLA N°03 DOUBLE STOREY

ELEVATIONS



TOTAL INTERIOR LIVING AREA 378.6 m²

GROUND FLOOR 189.8 m²

Living	41 m ²
Dining room	23.4 m ²
Kitchen	18.7 m ²
Ensuite Bedroom 1	22.6 m ²
Ensuite Bedroom 2	22.4 m ²
Dressing Ensuite Bedroom 2	3.4 m ²
Ensuite Bedroom 3	27.4 m ²
Dressing Ensuite Bedroom 3	6.1 m ²
Guest toilet	5.1 m ²
Lobby, Hallway	19.7 m ²

BASEMENT 188.8 m²

Hallway	14.6 m ²
Corridor	13.9 m ²
Laundry	11.7 m ²
Gym, Hammam	48.8 m ²
Wine Cellar	14.4 m ²
Garage	59.6 m ²
Technical room swim Pool	25.8 m ²

TOTAL EXTERIOR AREA 146.8 m²

Patio/Fountain	15 m ²
Covered terrace	18.2 m ²
Pool Deck	64.5 m ²
Swimming pool	49.1 m ²

TOTAL AREA 525.4 m²

Plot of Land	972.1 m ²
Altimetry	15

MJ Développement
55 Avenue d'Espagne
64600 ANGLÈT - FRANCE
Tel: +33 5 59 03 13 00

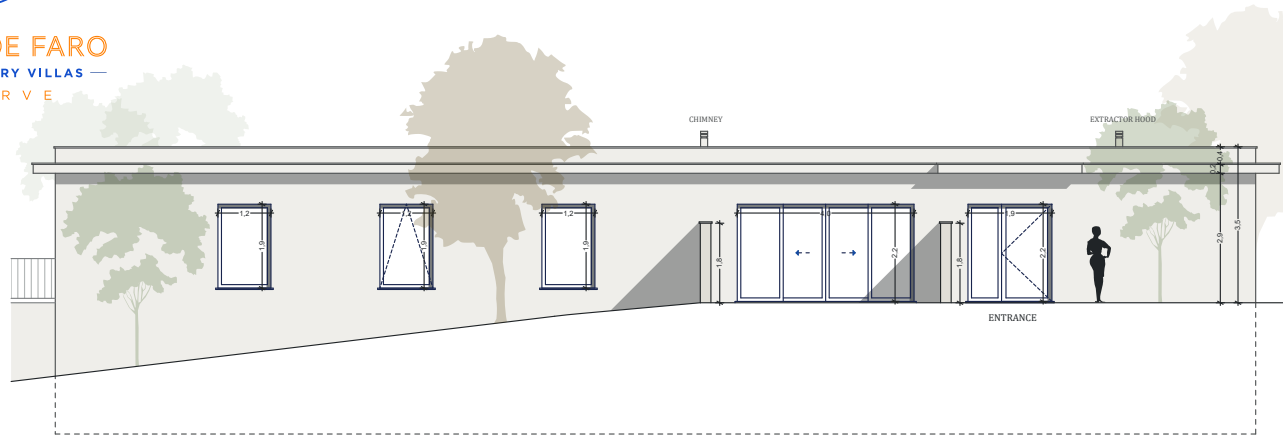
MJ DÉVELOPPEMENT
PROMOTEUR CONSTRUCTEUR

Serip Groupe
2, avenue de la Liberté
83120 Sainte-Maxime - FRANCE


SERIP GROUPE



QUINTA DE FARO
— PRIVATE LUXURY VILLAS —
ALGARVE



WEST SIDE



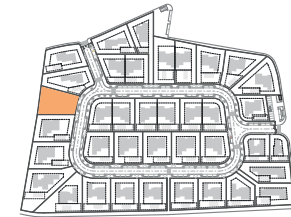
SOUTH SIDE

Kitchen equipment is not contractual. Their position is indicative. Dimensions and areas are given subject to technical construction and execution requirements. The fallout from false ceilings, soffits and pipes are not systematically shown. The thickness of the insulation will be determined by the technical execution study and therefore the data in this plan are only indicative.

SALES PLAN

VILLA N°03 DOUBLE STOREY

ELEVATIONS



TOTAL INTERIOR LIVING AREA 378.6 m²

GROUND FLOOR 189.8 m²

Living	41 m ²
Dining room	23.4 m ²
Kitchen	18.7 m ²
Ensuite Bedroom 1	22.6 m ²
Ensuite Bedroom 2	22.4 m ²
Dressing Ensuite Bedroom 2	3.4 m ²
Ensuite Bedroom 3	27.4 m ²
Dressing Ensuite Bedroom 3	6.1 m ²
Guest toilet	5.1 m ²
Lobby, Hallway	19.7 m ²

BASEMENT 188.8 m²

Hallway	14.6 m ²
Corridor	13.9 m ²
Laundry	11.7 m ²
Gym, Hammam	48.8 m ²
Wine Cellar	14.4 m ²
Garage	59.6 m ²
Technical room swim Pool	25.8 m ²

TOTAL EXTERIOR AREA 146.8 m²

Patio/Fountain	15 m ²
Covered terrace	18.2 m ²
Pool Deck	64.5 m ²
Swimming pool	49.1 m ²

TOTAL AREA 525.4 m²

Plot of Land	972.1 m ²
Altimetry	15

MJ Développement
55 Avenue d'Espagne
64600 ANGLÈT - FRANCE
Tel: +33 5 59 03 13 00

MJ DÉVELOPPEMENT
PROMOTEUR CONSTRUCTEUR

Serip Groupe
2, avenue de la Liberté
83120 Sainte-Maxime - FRANCE


SERIP GROUPE